



# SRI BALAJI P.G. COLLEGE (MBA)

R.C.No. 07/05/AP MBA 2002/016 Dt. 17-06-2003

Approved by A.I.C.T.E. New Delhi, Affiliated to J.N.T.U.A., Anantapuramu

(Established under Sri Balaji Educational Society, Anantapuramu)

## Mandatory Disclosure (2025-26)

1	AICTE FILE No. Last Approval	F.No. South-Central/1-44643290351/2025/EOA
	Date & Period of last Approval	03-Jan-2025
	AICTE FILE No. First Approval	07/05/AP MBA 2002/016
	Date & Period of First Approval	17 <sup>th</sup> June 2003

2	Name of the Institute	SRI BALAJI PG COLLEGE (MBA)
	Courses	MBA
	Address of the institution	ALAMURU (POST), RUDRAMPETA, ANANTAPURAMU, Andhra Pradesh, 515 001
	Longitude & Latitude	77,34,10 & 14,39,30
	Phone Number	8886630022, 9440429977
	Office Hours	9.00 AM to 05.00 PM
	Email	principal.jy@jntua.ac.in
	Website	sribalajimba.in
	Nearest Railway Station	Ananthapuramu (6Km)
	Nearest Air port	Kempegowda International Airport, Bangalore.

3	Institute Type	Unaided – Private , Non-minority
	AICTE-Region	South-Central

4	Society/Trust Running the institution	SRI BALAJI EDUCATIONAL SOCIETY, VENUGOPAL NAGAR,ANANTAPUR,A.P, 515001,
	Registration No	330 of 1991
	Registered with	District Registrar of Assurances, Ananthapur
	Registered Date	02/11/1991

**PRINCIPAL**  
**SRI BALAJI P.G. COLLEGE (MBA)**  
**ANANTAPUR**



Sanapa Road, Alamuru (P), Rudrampeta, Anantapuramu - 515 002. (AP)



[www.sribalajimba.in](http://www.sribalajimba.in)



[principal.jy@jntua.ac.in](mailto:principal.jy@jntua.ac.in)



8886630022



# SRI BALAJI P.G. COLLEGE (MBA)

R.C.No. 07/05/AP MBA 2002/016 Dt. 17-06-2003

Approved by A.I.C.T.E. New Delhi, Affiliated to J.N.T.U.A., Anantapuramu

(Established under **Sri Balaji Educational Society**, Anantapuramu)

5	<b>Name of the affiliating university</b>	Jawaharlal Nehru Technological University Anantapur
	<b>Address</b>	Sharada Nagar, Ananthapuramu
	<b>Website</b>	www.jntua.ac.in

6	<b>Name of the Principal/Director</b>	Dr. M. Subba Rao
	<b>Exact Designation</b>	Principal
	<b>Contact Numbers</b>	8886630022, 9440429977
	<b>Email</b>	balajimbaatp@gmail.com
	<b>Highest degree</b>	Ph.D
	<b>Field of specialization</b>	COMMERCE

7	<b>Governing Board Members</b>	
	<b>Name</b>	<b>Designation</b>
	1) Mr. P.Venkata Krishan Kishore Reddy	Chairman
	2) Dr. Palle Raghunatha Reddy	Correspondent & secretary
	3) Prof. Dr. Murali Gorikapudi	University Nominee
	4) Smt. N.Sindhura Reddy	Member
	5) Dr.T.Sreenivasulu Reddy	Member
	6) Mr.K.Sreekanth Reddy	Member
	7) Dr.M. Subba Rao	Principal

8	<b>Academic advisory body</b>	
	Dr.M. Subba Rao	Principal
	S. Raghavendra	Dept. of MBA
	P. Umesh Naidu	Administrative Officer (A.O)
	P. Chandra Sehkar	Office Superintendent

9	<b>Students feedback mechanism</b>	Feedback on Institutional governance & faculty performance is taken from students. These feedbacks are analyzed & accordingly improvements are done
---	------------------------------------	---

**PRINCIPAL**  
**SRI BALAJI P.G. COLLEGE (MBA)**  
**ANANTAPUR**



Sanapa Road, Alamuru (P), Rudrampeta, Anantapuramu - 515 002. (AP)



www.sribalajimba.in



principal.jy@jntua.ac.in



8886630022





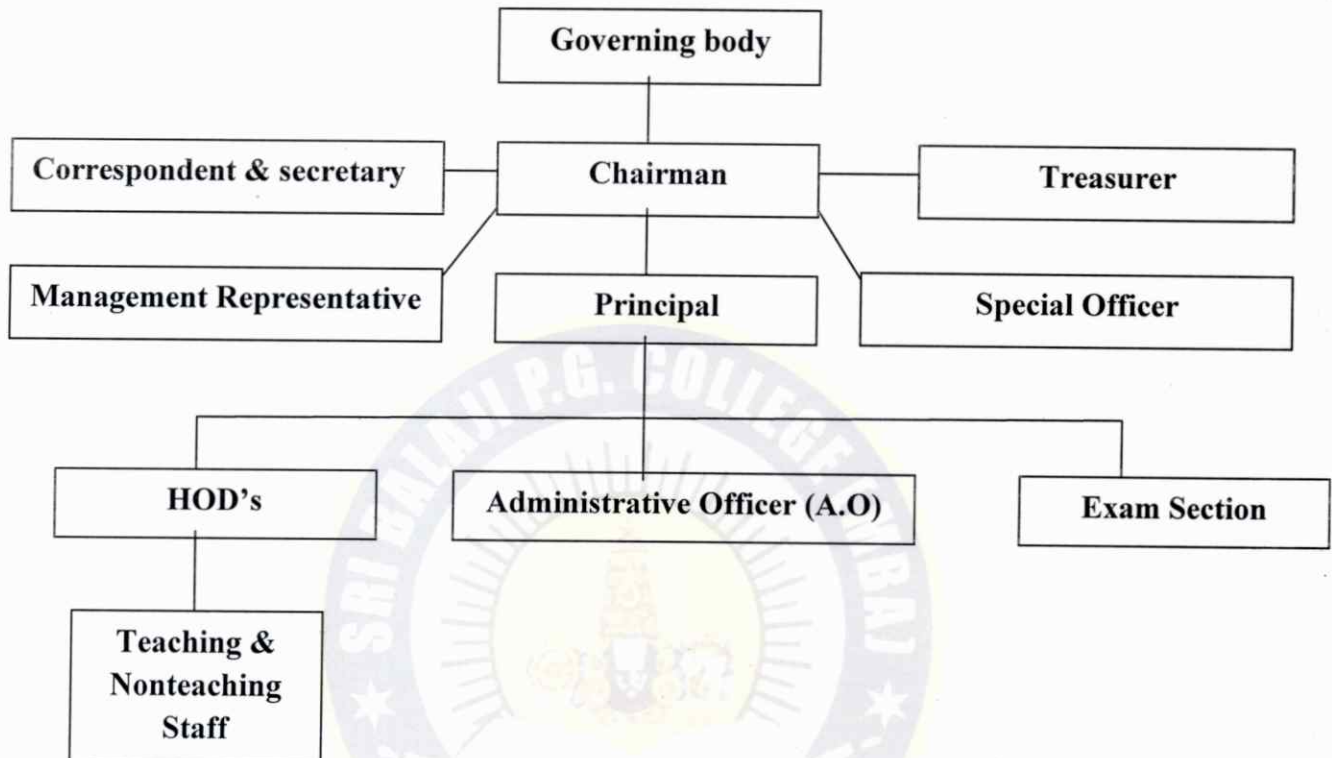
# SRI BALAJI P.G. COLLEGE (MBA)

R.C.No. 07/05/AP MBA 2002/016 Dt. 17-06-2003

Approved by A.I.C.T.E. New Delhi, Affiliated to J.N.T.U.A., Anantapuramu  
(Established under Sri Balaji Educational Society, Anantapuramu)

10.

## Organizational Chart



11	Name of The Department	Master of Business Administration
	Course	MBA
	Level	Post graduate
	Year of First approval	2003 by AICTE
	Present Intake	180
	AICTE FILE No. First Approval	07/05/AP MBA 2002/016
	Date & Period of First Approval	17 <sup>th</sup> June 2003

  
**PRINCIPAL**  
**SRI BALAJI P.G. COLLEGE (MBA)**  
**ANANTAPUR**



Sanapa Road, Alamuru (P), Rudrampeta, Anantapuramu - 515 002. (AP)



[www.sribalajimba.in](http://www.sribalajimba.in)



[principal.jy@jntua.ac.in](mailto:principal.jy@jntua.ac.in)



8886630022



# SRI BALAJI P.G. COLLEGE (MBA)

R.C.No. 07/05/AP MBA 2002/016 Dt. 17-06-2003

Approved by A.I.C.T.E. New Delhi, Affiliated to J.N.T.U.A., Anantapuramu  
(Established under **Sri Balaji Educational Society**, Anantapuramu)

13	Academic sessions	
	Academic schedule	As per JNTUA university direction
	Examination system	Semester wise
	Declaration of Results	Results are announced by the JNTUA university

14	Counseling / Mentoring	Regular Counseling for students by faculty advisors
	Career Counseling	Yes, Done by faculty advisors regularly and also by Placement officer
	Medical Facilities	Yes
	Students Insurance	Yes
	Cultural Activities	Yes
	Sport Activities	Yes
	Technical Activities	Yes
	Industrial Visit	Yes
	Portable water supply	Yes
	Internet facility	Yes
	Fire safety	Yes
	CCTV installation	Yes
	Parking Facility	Yes
	First aid facility	Yes
	Transport facility	Yes
	Generator facility	Yes
	Alumni Activities	Yes

**PRINCIPAL**  
**SRI BALAJI P.G. COLLEGE (MBA)**  
**ANANTAPUR**



Sanapa Road, Alamuru (P), Rudrampeta, Anantapuramu - 515 002. (AP)



[www.sribalajimba.in](http://www.sribalajimba.in)



[principal.jy@jntua.ac.in](mailto:principal.jy@jntua.ac.in)



8886630022